



MONTHLY MEMBERSHIP PROGRESS REPORT

District 4 C6

Results as of: 06/30/2018

GMT: HOWARD HUDSON

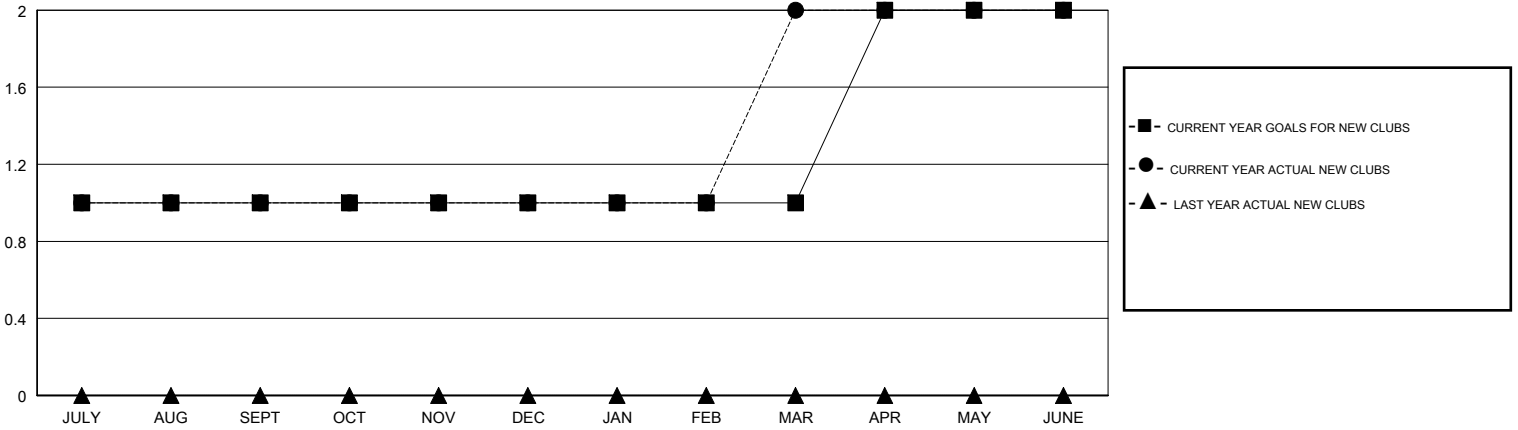
LOCATION CALIFORNIA

GMT CA

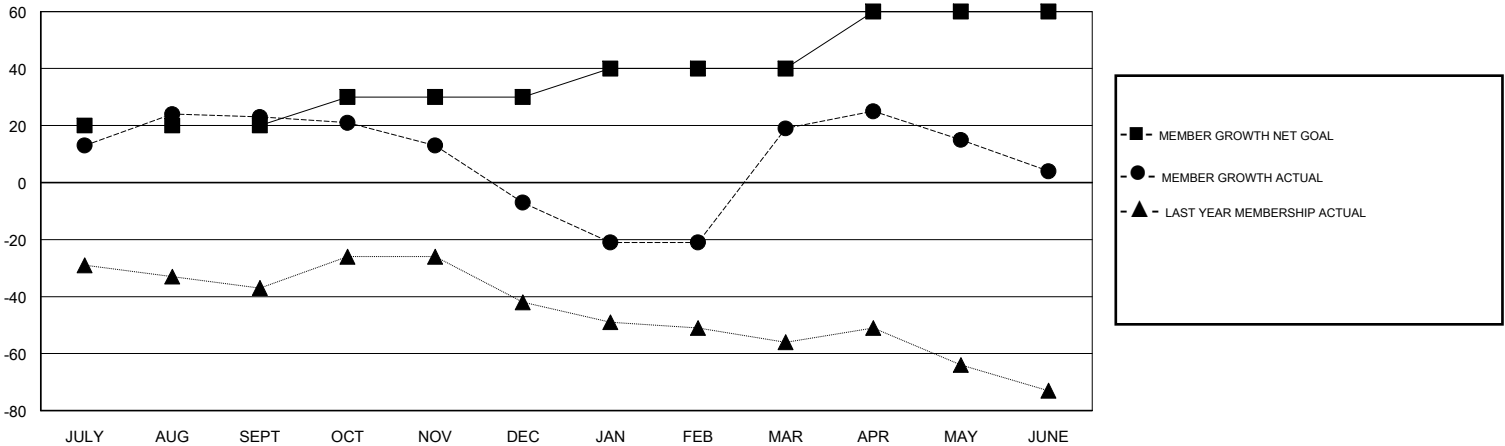
Clubs			
RESULTS FOR 2017-2018			
QUARTER	NEW CLUB GOAL	NEW CLUBS	DROPPED CLUBS
JULY/AUG/SEPT	1	1	0
OCT/NOV/DEC	0	0	0
JAN/FEB/MAR	0	1	0
APR/MAY/JUNE	1	0	0

Members			
RESULTS FOR 2017-2018			
QUARTER	MEMBER GROWTH NET GOAL	MEMBER GROWTH ACTUAL	DROPPED MEMBERS ACTUAL (including transfers)
JULY/AUG/SEPT	20	74	46
OCT/NOV/DEC	10	22	50
JAN/FEB/MAR	10	65	31
APR/MAY/JUNE	20	69	77

GOALS AND ACTUAL NEW CLUBS CUMULATIVE



GOALS AND ACTUAL MEMBERS CUMULATIVE



DROPPED CLUBS: 0	38 CLUBS OF 45 ADDED 1 OR MORE NEW MEMBERS	<u>GENDER DISTRIBUTION</u>	
DROPPED MEMBERS		MALE	695 (60.07%)
DECEASED	14	FEMALE	462 (39.93%)
CLUB CANCELLED	0	Women Percentage Fiscal Year Goal: 40%	
OTHER	190	TOTAL FAMILY UNIT MEMBERS	0
TOTAL	204	FAMILY MEMBERS PAYING HALF DUES	0

[CLICK HERE FOR CUMULATIVE MEMBERSHIP DATA](#)